

CHESS IN SCHOOLS



This is the official logo of FIDE, with the motto (in Latin), meaning 'we are all one family.'

We thought it would be good to have also a Commission logo. Do you like it?

Did you celebrate International Chess Day on July 20? If not, make a date for next year.

If you are an American citizen, than you have your own National Chess Day later this year on October 10.

They would be ideal times to wear the chess scarf we see modelled by GM Jennifer Shahade on page 3.

In this issue:

2 In the Beginning (325-328)

by Igor Sukhin

3 Chess scarf

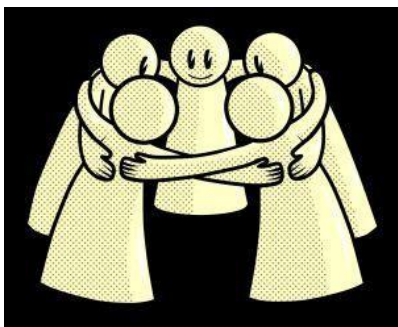
-Modelled by GM Jennifer Shahade

4 International Chess Day

7 Chess Art

8 Puzzles – World Schools Ch.

by FST Kevin O'Connell

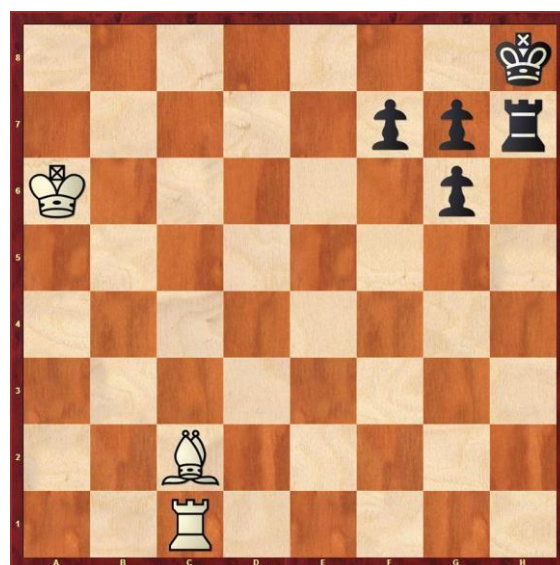
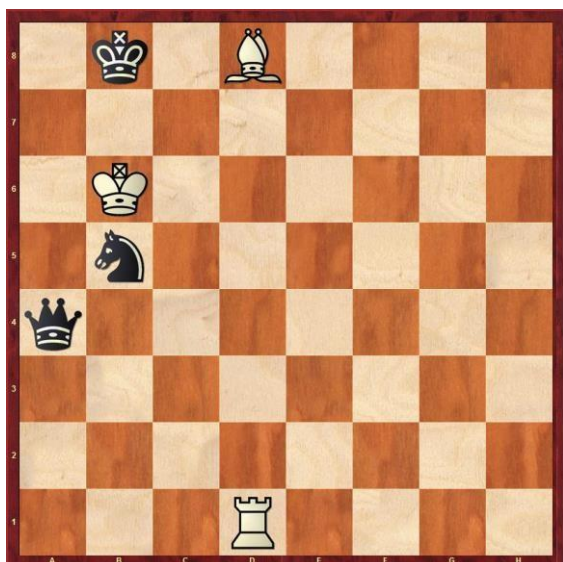


In the Beginning

Chess Camp 5 by Igor Sukhin

Checkmate in Two

In the Beginning – 325 (*Chess Camp 5-229*)
White to move.



325. 1. ♔d8–c7+.

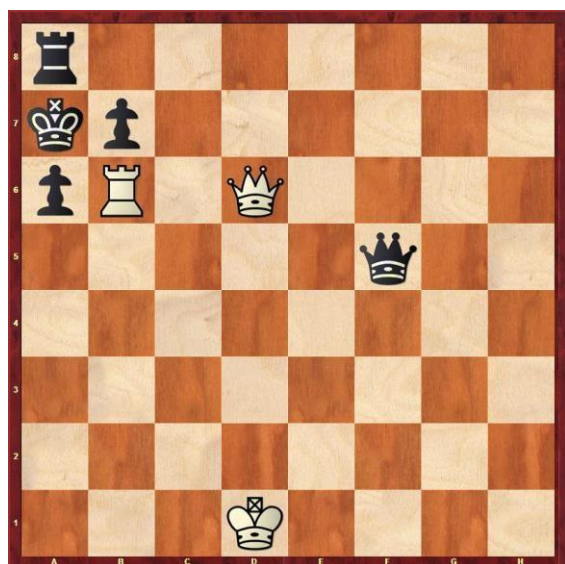
326. 1. ♔c2xg6.

In the Beginning – 326 (*Chess Camp 5-235*)
White to move.

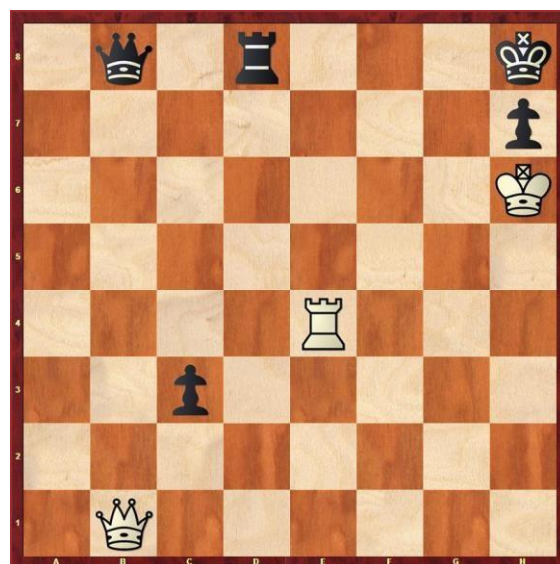
In the Beginning – 327 (*Chess Camp 5-241*)
White to move.

Chess Scarf

How about this to keep your neck warm in a draughty room?



In the Beginning – 328 (*Chess Camp 5-247*)
White to move.



327. 1. ♖b6xa6+.

328. 1. ♖e4–e8+.

That's GM Jennifer Shahade modelling the scarf. The scarf was designed by Joan of Dark.

If you want to try knitting this, you will need 1408 metres of yarn!

The pattern is in the book *Geek Knits* by Joan of Dark (a.k.a. Toni Carr).

The photo of GM Shahade (Tweeted by her) is by Kyle Cassidy.

Jennifer is a chess champion, author, poker player and commentator. Beside being a two-time US Women's Chess Champion, she is also the Mind Sports Ambassador at Poker Stars. Go to www.jennifershahade.com to learn all the awesome things about her!



Joan has some good advice if your peers think you do geeky things – just stop telling them about anything you do that is not 'cool'.

International Chess Day

July 20 is international chess day. One of the things we celebrate on that day is the anniversary of the founding of FIDE. That was on July 20, 1924, so it won't be long until the 100th anniversary.

Russia is one of the countries that has the most celebrations on that day. They place so much importance on it, that they had a preliminary day of celebration in May. Here we have the President of the National Olympic Committee, Alexander Zhukov showing that he can play chess. Judging from the way he is looking at the clock and the expression on his face, we can guess that he was running short of time.



Here is what the FIDE President said about the big day:

July 20, 2015
Moscow

Dear chess friends,

In my capacity as President of World Chess Federation - FIDE - I am pleased to congratulate all of you on the International Chess Day!

This holiday was initiated by UNESCO in 1966 to commemorate the date of FIDE establishment on the 20th of July 1924 in Paris. Today FIDE embraces 186 national chess federations, 117 of which are recognized by the national Olympic committees of their countries.

This day is celebrated globally with professional and amateur chess tournaments, seminars and lectures aimed to promote the most intelligent of all sports.

I wish all chess lovers to arrange the black-and-white chess pieces on their chess boards and play with their friends and relatives as often as possible and to teach their children the subtleties of this ancient game.

I appeal to you to take an active part in various chess events organized by local chess clubs, to come and play in amateur tournaments and to attend professional chess competitions. Thus we shall not only keep the elegant tradition of chess but make chess the most popular sports in the world!

Gens una sumus! We are one family!

Kirsan Ilyumzhinov
FIDE President

Below we see the FIDE President playing White in a Moscow park on International Chess Day.



The next one was posted on Facebook by user 'International Chess Day' in 2012...



That Facebook user has set up a web page for the day and is already promoting an event to be held in Melbourne, Australia on International Chess Day next year, 20 July 2016.



But back to Moscow this year and the Etude Chess School...



International Chess Day was first celebrated in 1966. It is not much celebrated in the United States, where they have their own National Chess Day (as reported by Chess.com)...

For the past several years, every 2nd Saturday of October has been declared National Chess Day by the U.S. Congress. National Chess Day in 2014 is 11 October and National Chess Day in 2015 is October 10!

President Gerald Ford set the 2nd Saturday in October aside as a day "To give special recognition to a game that generates challenge, intellectual stimulation, and enjoyment for citizens of all ages."

If you missed out on July 20, you could put October 10 in your diary as well as July 20, 2016 of course!

Chess Art

The Doprastav chess club, Bratislava (Slovakia) has built a wonderful gallery of chess art. Here are some examples.



Jean-Pierre ALAUX – L'Apocalypse



Charles BARGUE – The Chess Game

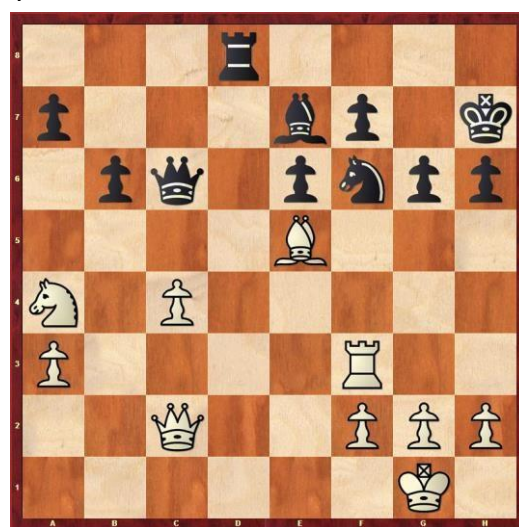
Puzzles

selected by **FST & FM Kevin O'Connell** (www.kochess.com)

1 White to play. Simple technique. 3 Black to play. Overload & deflect

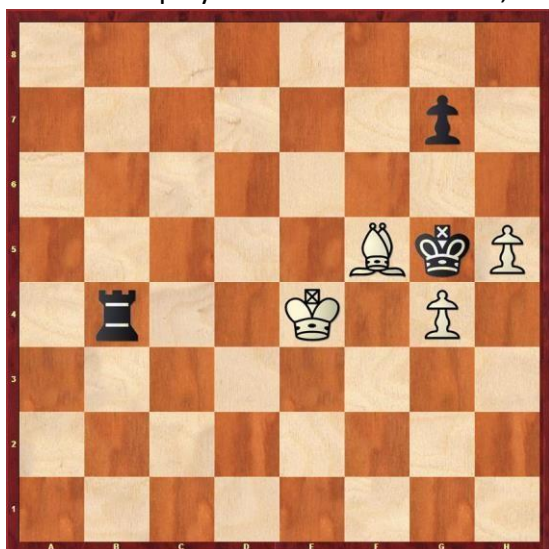


Javokhir SINDAROV – Sultan AL DARMAKY
World Schools Ch u11 Open, Pattaya 2015

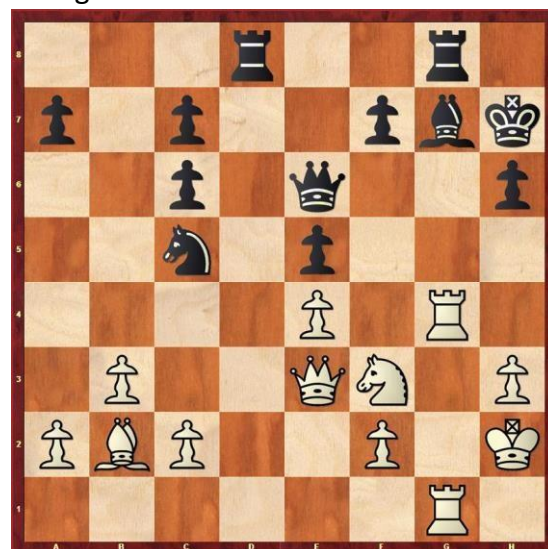


Maru MITANK – Akobirkhon SAYDALIEV
World Schools Ch u7 Open, Pattaya 2015

2 White to play. Fortress! 4 White, to play, is winning. What's best?



Jerlyn Mae SAN DIEGO – Nazerke NURGALI
World Schools Ch u11 Girls, Pattaya 2015



Leyla BUDAGOVA – Eflin DURMAZ
World Schools Ch u7 Girls, Pattaya 2015

SOLUTIONS TO PUZZLES

1. 20. Bf1xf6 1-0 [20... B7xf6 21. Wh5-h7#]
2. 67. B4xe4-e5?? [67. B4xe4-f3=] 67... Bb4xg4+ [... 0-1, 79]
3. 30... Bc6-e4! 31. Bc2-c1 [31. Bc2xe4 Bd8-d1+ 32. B4xe4-e1 Bd1xe1#] 31... B4xe4+ [... 0-1, 74]
4. 25. Bg4-h4 f7-f5 [25... Bg7-h8 26. Bf3-g5+ Bg8xg5 27. B3xe3xg5 B6-f6 28. B4xh6+ B6xh6
29. Bg5-f5+! B6-g6 30. Bg1xg6 f7xg6 31. B5-f7+ B8-h8-g7 32. B7-e7; 25... f7-f6 26. Bb2-c1 f6-f5 27. Bf3-g5+ 26. Bf3-g5+ 1-0.]