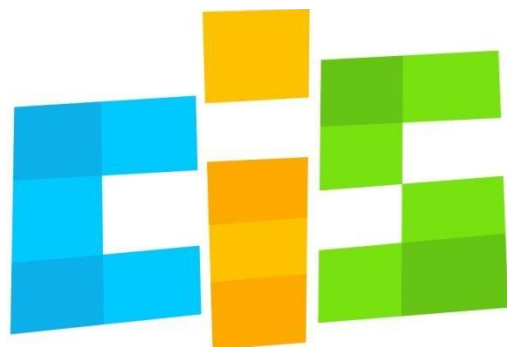




MOVES
FOR LIFE

**USING CHESS TO MAKE CHILDREN BETTER IN IRELAND SOCIALLY
ADJUSTED, MORE INTELLIGENT, BETTER HUMAN BEINGS**



CHESS IN SCHOOLS



James Flear.

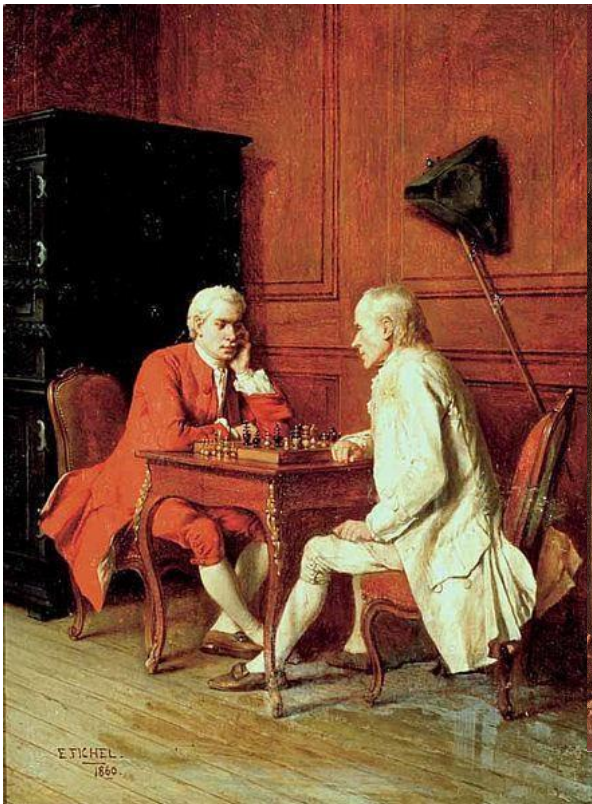


This issue is devoted to Chess Art, mostly the 'virtual' art gallery assembled by the Doprastav club in Bratislava. But we start with some of the new designs by our resident cartoonist (and logo designer)



Squares have names

Planet Chess



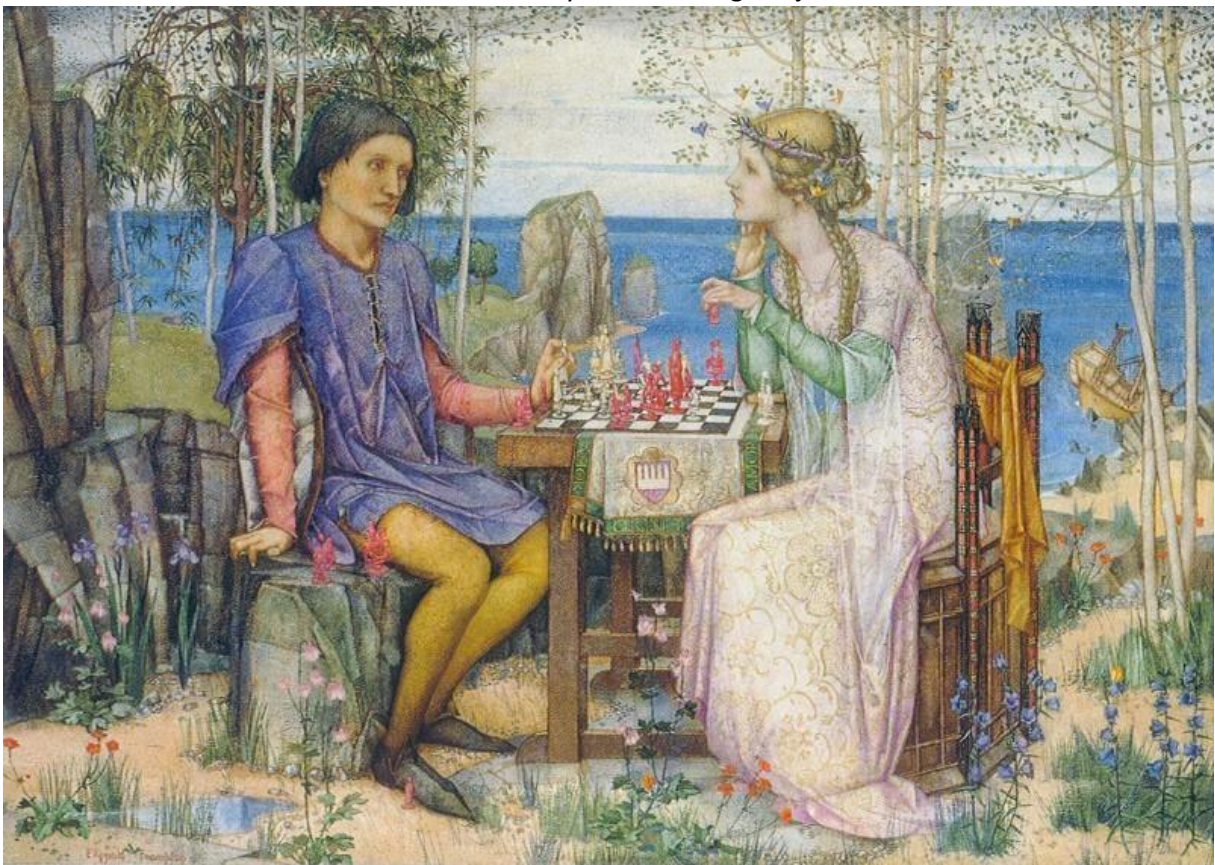
Benjamin Eugène FICHEL – The Chess Game



Cornelis DE MAN – The Chess Players



Edward Harrison MAY - Lady Howe mating Benjamin Franklin



Edward Reginald FRAMPTON - Ferdinand and Miranda, from The Tempest Act V



Frederick Judd WAUGH – The Chess Players



Errico



George Goodwin KILBURNE – A Game of Chess



Girolamo INDUNO - *Una Partita a Scacchi* (Fernando & Iolanda)





Giulio CAMPI - Partita a scacchi, 1550



Jan Cornelisz VERMEYEN - John Frederick the Magnanimous playing chess, 1549



Hans MIELICH - Anna und ihr Gemahl Albrecht beim Schachspiel





Henry Pierre PICOU - *Jeu D'Echecs Indien*, 1876



Jean-Léon GEROME - *Almehs playing Chess in a Cafe*, 1870